

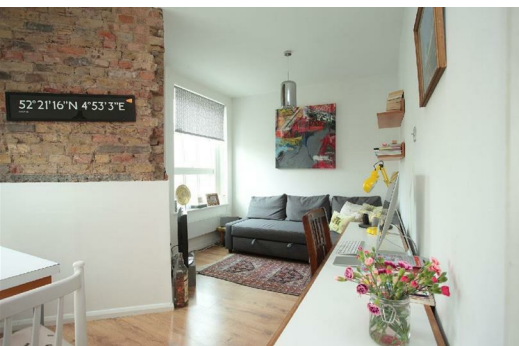
Wilmot Street, London, , E2 0BU £3,000 PCM

Elms Estates are delighted to offer To Let this Rarely Available Three Bedroom Apartment located in this Beautiful Victorian Building just moments from Bethnal Green Station.

The property is situated on the ever popular Wilmot Street just off Bethnal Green Road. A delightful street with numerous Green Spaces such as Weaver's Fields, Bethnal Green Gardens, Museum Gardens, St Bartholmew Gardens within easy reach. It has Excellent Transport Links such as Bethnal Green Underground & Overground Stations close by. It is a short walk to the famous Brick Lane & Shoreditch High Street and close to many superb Local Amenities and an abundance of Shops, Restaurants and Cafes.

Internally the property has a modern open plan kitchen/lounge with exposed brickwork, Three bedrooms and modern bathroom. The property is to move in to from 15 June 2023 onwards.

For more information or to arrange a viewing please do not hesitate to call in and speak with one of our Property Consultants.



Exterior

Lounge Area

Kitchen Area

Bathroom

Bedroom One

Bedroom Two

Bedroom Three

Material Information

Deposit: £3,461.53

Length Of Tenancy: One Year

Council Tax Band: D

